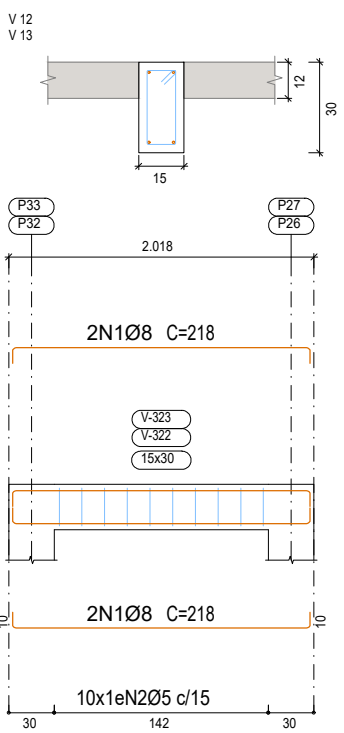
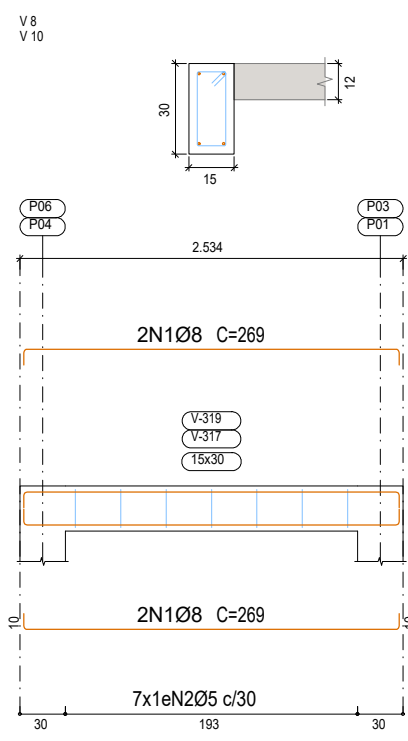
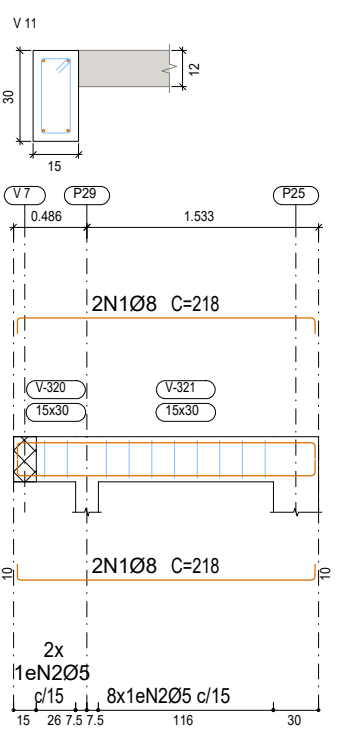
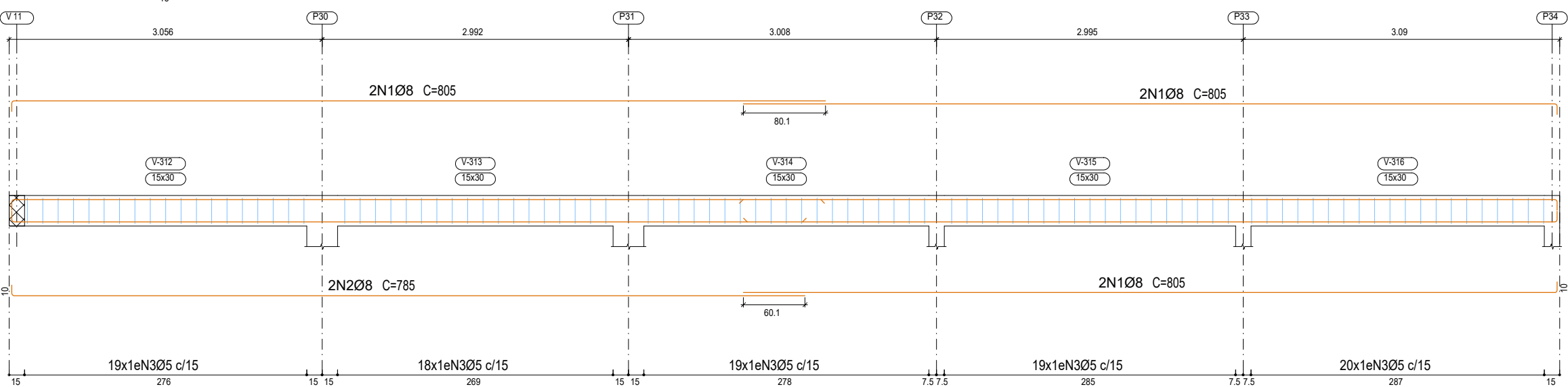
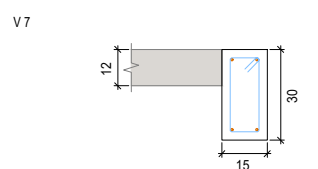
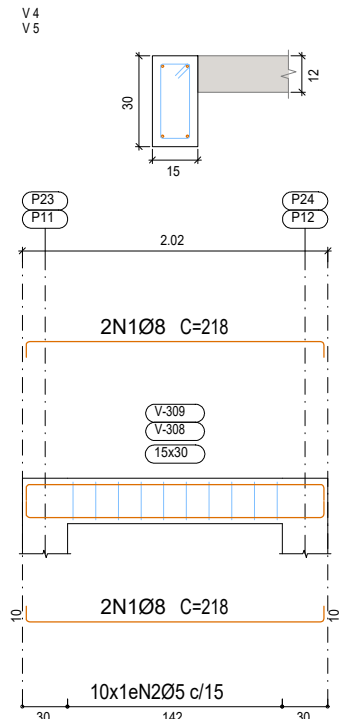
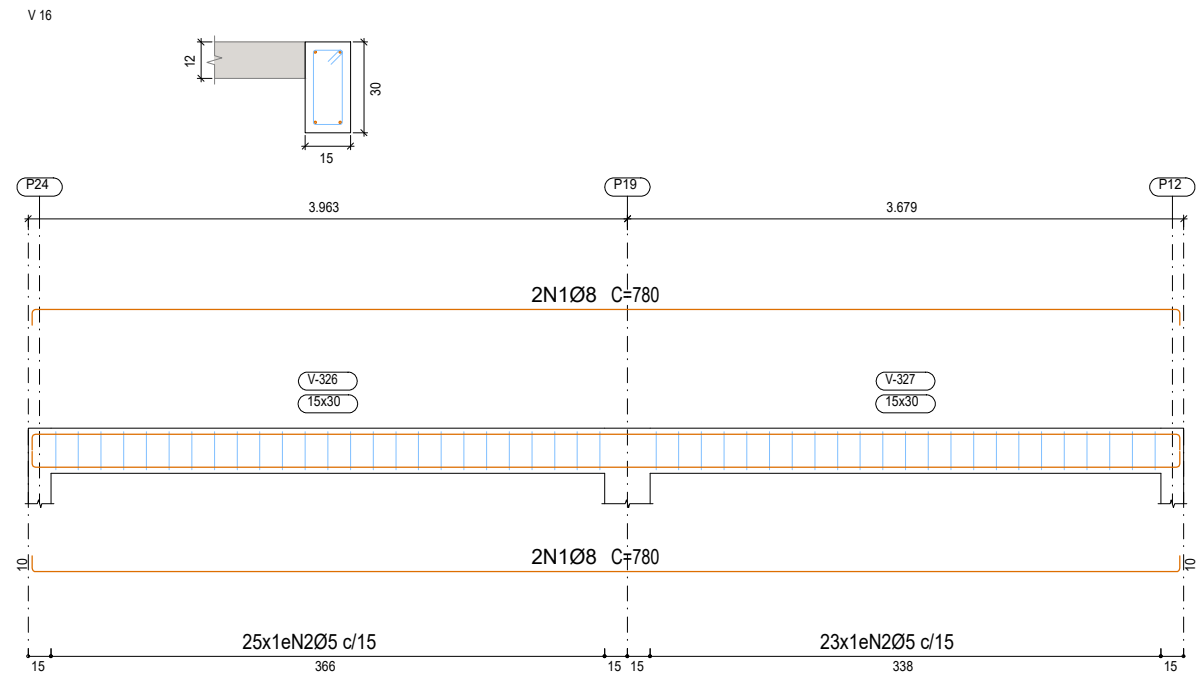
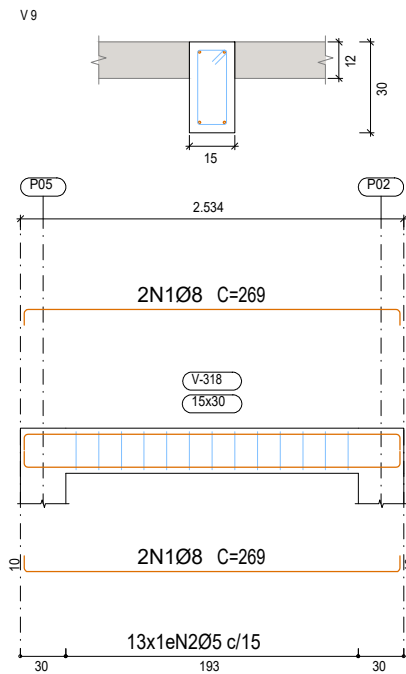
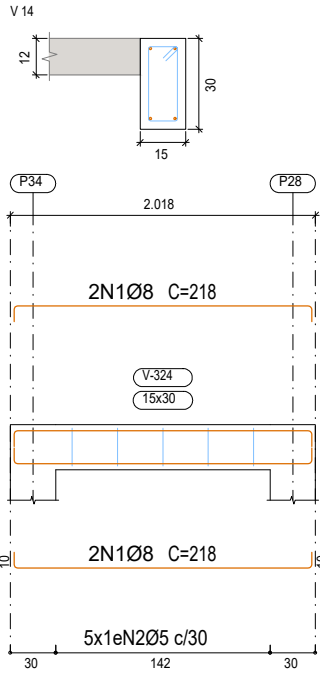
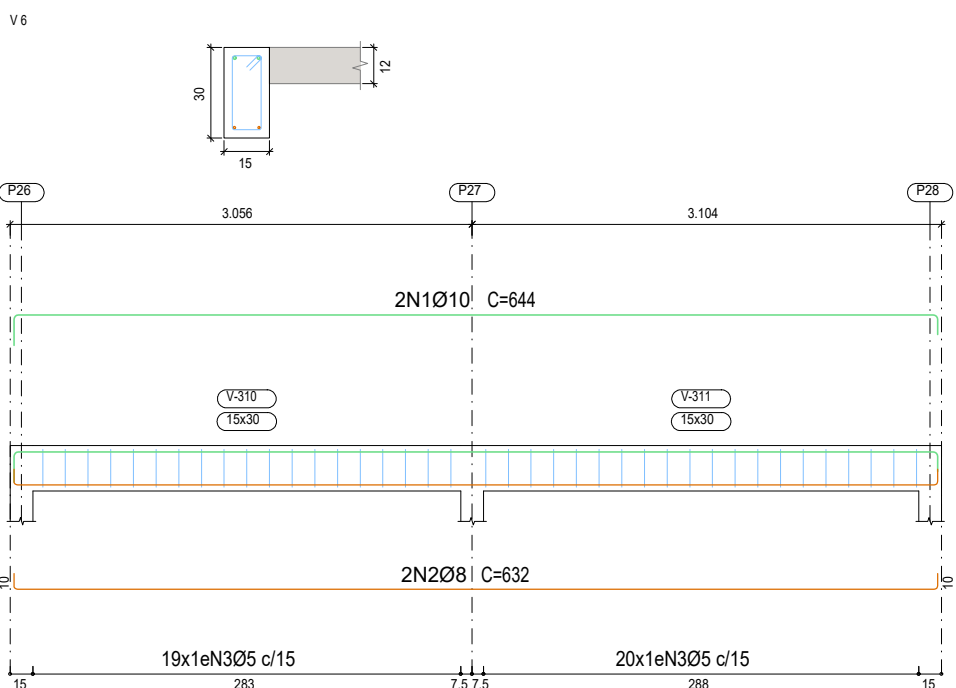
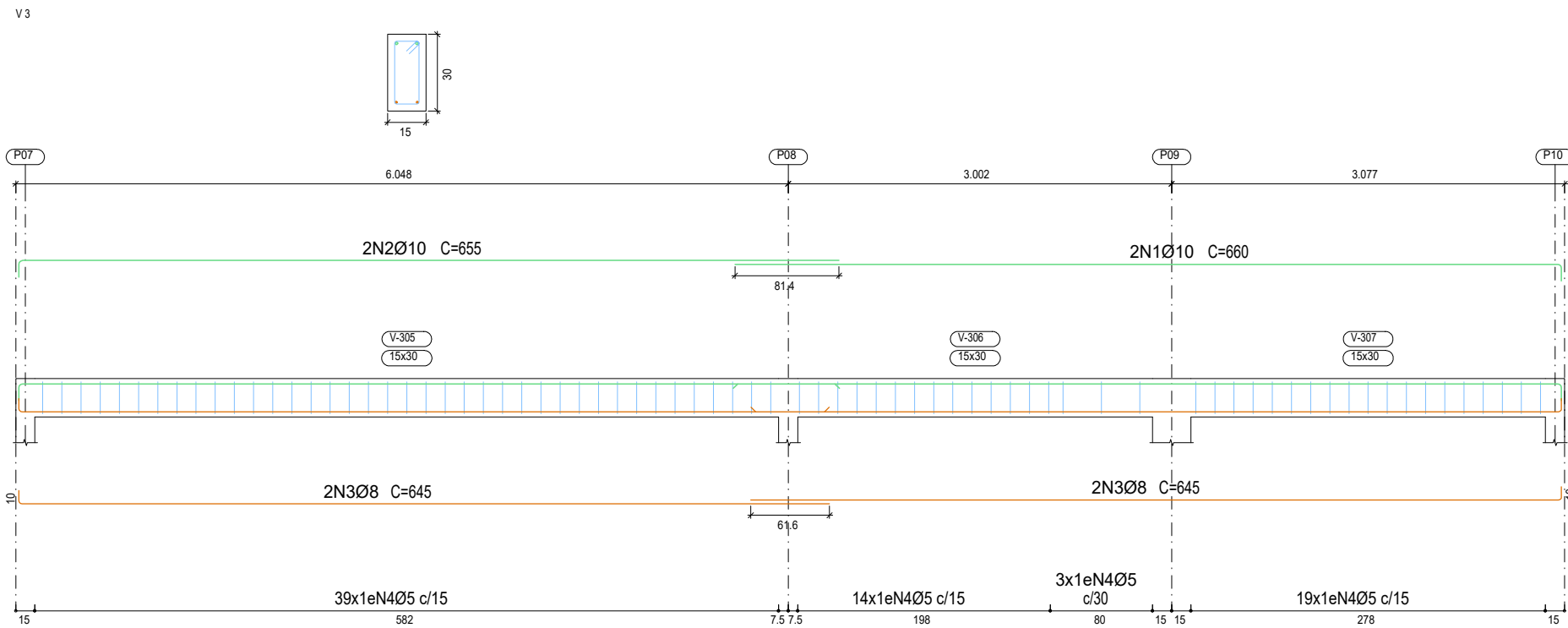
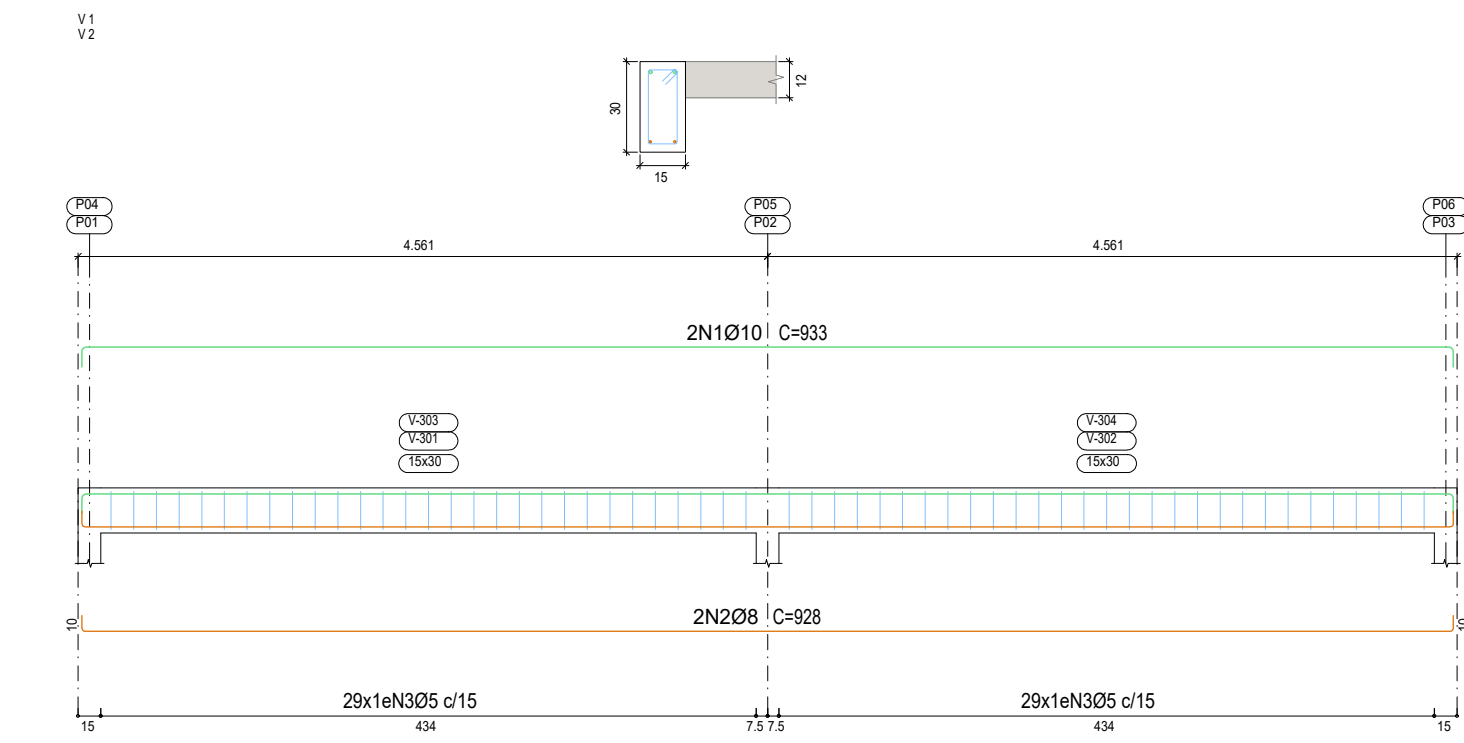


TOPO DA CALHA  
Desenho de vigas  
Concreto: C30, em geral  
Aço das barras: CA-50 e CA-60  
Aço dos estribos: CA-50 e CA-60  
Escala vigas 1:50  
Escala seções 1:25  
Escala aberturas 1:25



Resumo Aço		Comp. total (m)	Peso+10% (kg)	Total
Desenho de vigas				
CA-50	Ø8	255.4	111	209
	Ø10	92.2	62	
	Ø12.5	34.1	36	
CA-60	Ø5	389.2	67	67
Total				276

Elemento	Pos.	Diam.	Q.	Esquema (cm)	Comp. (cm)	Total (cm)	CA-50 (kg)	CA-60 (kg)
V 1+V 2	1	Ø10	2		933	1866	11.5	
	2	Ø8	2		928	1856	7.3	
	3	Ø5	58		78	4524		7.1
	Total+10%: (x2):						20.7 41.4	7.8 15.6
V 4+V 5	1	Ø8	4		218	872	3.4	
	2	Ø5	10		78	780		1.2
	Total+10%: (x2):						3.7 7.4	1.3 2.6
V 6	1	Ø10	2		644	1288	7.9	
	2	Ø8	2		632	1264	5.0	
	3	Ø5	39		78	3042		4.8
Total+10%:						14.2	5.3	
V 3	1	Ø10	2		660	1320	8.1	
	2	Ø10	2		655	1310	8.1	
	3	Ø8	4		645	2580	10.2	
	4	Ø5	75		78	5850		9.2
Total+10%:						29.0	10.1	
V 7	1	Ø8	6		805	4830	19.1	
	2	Ø8	2		785	1570	6.2	
	3	Ø5	95		78	7410		11.6
Total+10%:						27.8	12.8	
V 8+V 10	1	Ø8	4		269	1076	4.2	
	2	Ø5	7		78	546		0.9
	Total+10%: (x2):						4.6 9.2	1.0 2.0
V 11	1	Ø8	4		218	872	3.4	
	2	Ø5	10		78	780		1.2
Total+10%:						3.7	1.3	
V 12+V 13	1	Ø8	4		218	872	3.4	
	2	Ø5	10		78	780		1.2
Total+10%: (x2):						3.7 7.4	1.3 2.6	
V 14	1	Ø8	4		218	872	3.4	
	2	Ø5	5		78	390		0.6
Total+10%:						3.7	0.7	
V 9	1	Ø8	4		269	1076	4.2	
	2	Ø5	13		78	1014		1.6
Total+10%:						4.6	1.8	
V 15	1	Ø10	2		785	1570	9.7	
	2	Ø12.5	3		792	2376	22.9	
	3	Ø12.5	2		515	1030	9.9	
	4	Ø5	35		98	3430		5.4
Total+10%:						46.8	5.9	
V 16	1	Ø8	4		780	3120	12.3	
	2	Ø5	48		78	3744		5.9
	Total+10%:						13.5	6.5
						Ø5: 0.0 Ø8: 110.0 Ø10: 62.6 Ø12.5: 36.1 Total: 208.7	67.2 0.0 0.0 0.0 67.2	

SECRETARIA DE ESTADO  
DA SEGURANÇA PÚBLICA

**SERGIPE**  
GOVERNO DO ESTADO

DIRETORIA DE ARQUITETURA E EDIFICAÇÕES  
PRAÇA TOBIAS BARRETO, Nº 20, BAIRRO SÃO JOSÉ  
CEP: 45050-220 ARACAJU/SE  
TEL.S: (79)3216-5454 / (79)98851-8337

TIPO: PROJETO DE ESTRUTURA EM CONCRETO ARMADO

ASSUNTO: DETALHAMENTO DE VIGAS - TOPO DA CALHA

END: Centro Administrativo Governador Augusto Franco - Capucho BLOCO 02

AUTOR DO PROJETO: JOSÉ VITOR DE JESUS COSTA

RESPONSÁVEL TÉCNICO: JOSÉ VITOR DE JESUS COSTA

DESENHISTA: JOSÉ VITOR DE JESUS COSTA

ESCALA: 1/50

DATA: 07/2025

CREA: 2719438219SE

Nº DA PRANCHA  
14/16